




Fact sheet Villages of Tuscany

General information

Name of the village	SORANO
Province	Grosseto
Tourist information	<p>IAT Tourist Information Office</p> <p>Piazza Pietro Busatti 8 58010 Sorano GR Tel +39 0564 633099 - +39 0564 633424 Email info@leviecave.it Sovana Office Tel +39 0564 614074</p> 
Notes	<p>For people with reduced mobility, it is recommended to visit the village with an electric drive or with the help of a companion. The roads can in fact be bumpy and not always easily accessible, as it is a medieval village.</p>





TESTED BY: [Handy Superabile Social Promotion Association](#) in 2025

Please note: The following information refers to the date of verification shown at the bottom of each sheet. The Association is not responsible for any significant changes made by the property after the visit.

Table of Contents

General information	1
Description.....	3
How to reach Scarlino.....	5
Parking	9
Route from the car park to the entrance	11
Description of the itinerary	13
Events.....	39
Accessible public places	39
Medical practices/healthcare facilities.....	44





Description



The territory of Sorano is located at about 400 meters above sea level and is part of that vast area that extends from the Fiora river to the Tiber. The village is characterized, geomorphologically, by fairly recent volcanic formations, in particular the area is marked by the presence of tuff which has favored its anthropization since ancient centuries. The tuffaceous rock is visible not only in the buildings that can still be admired today, but also in the excavated caves and Etruscan necropolises that surround the entire territory also rich in archaeological evidence dating back not only to the Etruscan period but also to the Iron Age.

Project carried out with the contribution of the





Sorano is not only an Etruscan center but also has conspicuous testimonies of the Middle Ages, whose main protagonists were the Aldobrandeschi Counts and later the Orsini, thanks to the marriage of Anastasia - the last heir of the Aldobrandeschi - with Romano Orsini in 1293.

From that date onwards all the historical and artistic events of the village coincide with those of Pitigliano, the usual residence of the Counts. The Orsini were always careful to equip Sorano - already geographically impervious - with adequate fortifications, building the imposing fortress right in the only point from which the town was not accessible to enemy troops. In reality, the first news of Sorano dates back to a document of 1172, in which the castle appears as the property of the Di Bartolomeo family. A document of 1210, ratified by Emperor Otto IV, confirms that on the death of Ranieri Di Bartolomeo, the territory entered together with the nearby village of Pitigliano permanently into the possessions of the Aldobrandeschi family. In 1274, following the division of the powerful family of Lombard origin into the two branches of Santa Fiora and Sovana, the castle remained the property of the latter, following the historical events of the family throughout the thirteenth century. In the fourteenth century, together with the County of Pitigliano and after the marriage of Anastasia and Romano, it passed to the Orsini family who defended it numerous times from the attacks of the Republic of Siena.

In 1608 it was acquired by Ferdinando I de' Medici, thus becoming part of the Grand Duchy of Tuscany. The acquisition process was divided into two main phases, one in 1604 when there was the formal cession of the lands by the Orsini family, now in financial and political decline and the other in 1608 when the act was ratified and ended with the actual taking possession by the Grand Duke who incorporated Sorano and the neighboring fiefdoms to the Medici jurisdiction. The acquisition put an end to centuries of independence of the Orsini county, transforming the strategic fortress into a garrison of the Medici Grand Duchy until 1737 when Tuscany passed to the Lorraine.





With the rise of the Habsburg-Lorraine, Sorano benefited from their reform policy especially under the Grand Duchy of Peter Leopold. In this period the Sasso Leopoldino was flattened and fortified to create a panoramic terrace with crenellated walls that soon became a symbol of Lorraine control in the territory. With the Lorraine, the village experienced a real modernization, passing from a military and gloomy stronghold to a functional administrative and agricultural center. Also with the Lorraine, the Fortress, no longer serving as a bulwark against invasions, began to transform itself from a war machine to a residence and logistics center, better preserved than other abandoned castles. So if with the Medici, Sorano was a border sentinel often neglected, with the Lorraine it became an integral and better managed part of the Tuscan State.

The beginning of our century saw a progressive depopulation of the town, in particular there were some neighborhoods close to the Sasso Leopoldino, abandoned under the threat of the progressive erosion of the tuffaceous ridge on which they stand. Today this danger seems to be averted and the municipal authorities have planned the reuse of the numerous homes, both for private and public purposes.

How to reach Sorano

<p>By car</p>	<p>From the North</p> <p>Take the A1 motorway towards Rome, exit Orvieto, continue on the SS 71, cross Bolsena, take the SS 2 Cassia and then continue on the SS 74 following the signs for Sorano.</p> <p>From the South</p>
----------------------	---





	<p>Take the Grande Raccordo Anulare (GRA) towards Florence, in Rome, take the A1 motorway, exit at Orte and follow the signs for Viterbo, in Siena take the SS 2 and then continue on the SS74 to Sorano.</p> <p>From Grosseto Take the SS1 Aurelia towards Rome, cross Albinia and continue on the SS74 to Sorano.</p> <p>From Rome Motorway Rome - Civitavecchia, take the coastal road towards Grosseto - Livorno, exit at Albinia and then follow the signs for Manciano and then Sorano.</p> <p>From Genoa: Take the A12 motorway, take the motorway towards Rome, exit at Albinia and continue on the SS74 state road to Sorano.</p>
--	---





By plane	<p>The nearest airport to reach Scarlino:</p> <ul style="list-style-type: none"> • Rome Fiumicino Airport, located about 152 km from Sorano.
Assistance service for people with disabilities	Yes
Embarkation/disembarkation of passengers with reduced mobility	With courtesy chair and ambulift/finger
Tactile paths for the blind and visually impaired	Yes
There is a toilet room accessible with grab handles	Yes
By train	
Nearest station	<p>The main railway stations offering direct bus connections to Sorano are Grosseto (trains from Florence, Siena, Rome and Pisa), Orbetello (trains from Florence, Siena, Rome and Pisa) and Viterbo Porta Fiorentina (trains from Rome). From here continue by bus</p>





<p>Assistance service for people with disabilities</p>	<p>The Grosseto station is enabled for the assistance service for people with disabilities and reduced mobility (PRM), while the Talamone station is not enabled. To use the service, it is necessary to contact the Italian Railway Network through the relevant Blue Room, at the following addresses:</p> <ul style="list-style-type: none"> • toll-free number: 800 90 60 60 (from a landline) • National number: 02 32 32 32 (from a landline or mobile) <p>The service provides information on the nearest enabled station and allows assistance to be booked.</p>
<p>Blue Hall Reference</p>	<p>Florence</p>
<p>There is a toilet room in the station accessible with grab handles</p>	<p>Yes</p>
<p>By public and private transport</p>	
<p>Nearest bus stop</p>	<p>The public transport service is operated by Autolinee Toscane, which offers connections from Grosseto to Sorano. For further details, please refer to the website (www.at-bus.it)</p>





<p>Presence of adapted buses with ramp</p>	<p>it is advisable to check the availability of the service in advance by contacting Autolinee Toscane. Contact details: toll-free number: +39 800142424 or +39 05551351</p>
--	--

Parking

<p>Public parking nearby</p>	<p>YES</p>
<p>Type of public parking floor</p>	<p>Asphalt</p>
<p>Presence of parking space reserved for people with disabilities</p>	<p>SI N. 1 in via Ricasoli, at the entrance to the Fortress, N.1 at Piazza del Municipio</p>
<p>Eventual notes</p>	<p>Request for access to the ZTL: Disabled badge holders can enter the historic center and the ZTL and park for free in the paid areas (blue stripes) The Sorano Police Command is located in Piazza del Municipio n. 15. Telephone switchboard +39 0564 633023 Email poliziamunicipale@comune.sorano.gr.it Pec comune.sorano@cert.legalmail.it Website https://www.comune.sorano.gr.it/it/unita_or_ganizzative/983</p>



Project promoted by



Regione Toscana



1 Via Ricasoli car park



2 Parking Piazza del Municipio



3ZTL entrance



4 Fortezza indoor parking

Project carried out with the contribution of the



Presidenza del
Consiglio dei Ministri
Ministro per la disabilità



Pathway from the car park to the entrance

Pathway from the car park to the starting point	<p>From the parking lot in Via Ricasoli to the external entrance of the Fortress, the path has no obstacles. The main entrance is not accessible to people with motor disabilities. To visit the internal area of the Fortress, it is advisable to arrive by car to Strada 27 Provinciale Pitigliano-Sorano and turn right at number 16. From here begins an uphill avenue that allows you to reach the internal area of the Fortress. The avenue has a ban on access except for authorized. For authorizations, contact the local Police Command (see parking section).</p> <p>From Piazza del Municipio to the main entrance of the village, the path is flat and free of obstacles</p>
Distance from parking to entrance	Variable from 500 to 50 meters
Type of trail surface	On asphalt
There are indicators and tactile maps	No



Project promoted by



Regione Toscana



5 Route from Via Ricasoli to the external entrance of the Fortress



6 Route from Via Ricasoli to the external entrance of the Fortress



7 at number 7 of Strada 27 provinciale Pitigliano - Sorano



8 civic height 7 of Strada 27 provinciale Pitigliano - Sorano

Project carried out with the contribution of the



Presidenza del
Consiglio dei Ministri
Ministro per la disabilità



9 Inner fortress area



10 route from Piazza del Municipio to the entrance of the itinerary

Description of the itinerary

Length	About 200 meters (historic center up to Palazzo Comitale) About 400 meters from the historic center to Masso Leopoldino. About 800 meters from Fortezza, descending towards the historic center and Masso Leopoldino.
Along the itinerary there are maps and tactile signs for the blind	No





Sorano is accessible to people with motor disabilities only in the stretch of Via Giovanni Selvi, and Via Roma (historic center). From the historic center you can also reach the Cortilone and the Masso Leopoldino which, due to the presence of numerous steps, are not accessible to people with physical disabilities.

The Fortress raised from the rest of the village is inaccessible due to the presence of numerous steps.

The itinerary starts from Via Selvi. From here continue ahead until you find the nineteenth-century aqueduct on your left. The monument looks like a very elegant building with large round arched windows, which allow you to admire the surrounding landscape. Concave and with 5 contemporary bronze fountains in the shape of a lion's head, each of which pours water into large shell-shaped washbasins.

The aqueduct shows the date of June 23, 1867 at the top, which probably coincides with the year of construction. He affixed some plaques on the wall in memory of the fallen of Sorano during the Nazi-Fascist liberation. Continuing forward, always on the left, you will find the Tourist Office and after a few meters you will find Porta di Sopra characterized by an ashlar arch, which represents the main entrance to the historic center. The gate is integrated into a system of walls that are no longer uniform today and is made of tuff and travertine, typical materials of the area. The gate was part of the defensive walls on the southern side, where in the past there was a huge moat that descended from the fortress to protect the town. The side outside the door presents a fascinating vantage point

The gate is also known as the "Ferrini Arch". The name given to the arch is in memory of the noble Ferini, owners of the palace above who, related to the Giaquili family, owned a lot of land between the area of Sorano and San Quirico. At the beginning of the street is the first nucleus of Palazzo Selvi, a building of the sixteenth century, renovated when the street took on an appearance very similar to today's.



Project promoted by



Regione Toscana

Via Selvi is free of obstacles. The pavement in smooth stone blocks is mainly flat. The center is characterized by narrow alleys and houses all different from each other.

The entrance portals of the houses are made of stone and have different shapes and decorations. Walking along the street, you will come across several craft shops and interesting houses that have facades of different colors, arches, external staircases, loggias and cellars dug into the tuff

Immediately after the blue building you will find a pink one with a beautiful portal from the 1500s. We are in front of the Little Synagogue, a Jewish temple that remained consecrated probably until the end of the nineteenth century, when the Jewish faith community resided.

Accessibility:

Tourist Office: reachable via an irregular step on the sidewalk, about 15 cm high. The door has an entrance threshold of about 5 cm and a net opening of more than 90 cm, with internal opening.

Via Selvi: free of obstacles.

Project carried out with the contribution of the



**Presidenza del
Consiglio dei Ministri**
Ministro per la disabilità

Project promoted by



Regione Toscana



11 Nineteenth-century aqueduct



12 Tourist Office



13 Upstairs Entrance



14 Selvi Palace

Project carried out with the contribution of the



**Presidenza del
Consiglio dei Ministri**
Ministro per la disabilità



15 Via Selvi



16 via Selvi

During the twentieth century, when the Jewish community had abandoned the center, the building was completely neglected, going through a long period of abandonment and decadence that lasted for almost the entire twentieth century.

Over the last few decades, restoration work has been carried out on the building. Thanks to this important redevelopment intervention, the ancient temple has regained its lost splendor and has been used as a place for cultural events.

The interior is very simple. On the sides of the building we find a small collection of Jewish objects that are fundamental and integral to Jewish worship. These objects preserved in showcases are not simple decorations, but ritual tools that sanctify the temple, the space and daily life, making the connection with God tangible.

All the material on display represents creation and divine light, connecting the present to the ancient Temple in Jerusalem. On the back wall of the main hall three columns are visible, testimony of how the liturgical space was organized to give dignity and order to worship, despite the modest size of the building.

Leaving the Small Synagogue, continue ahead towards the Collegiate Church of San Niccolò



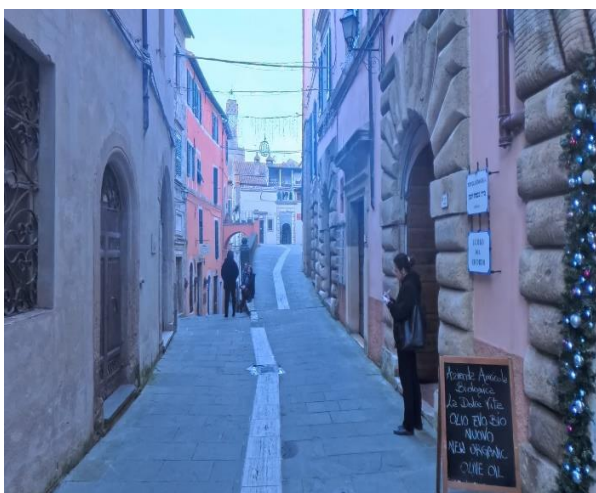


admiring the oval and square portals of the houses.

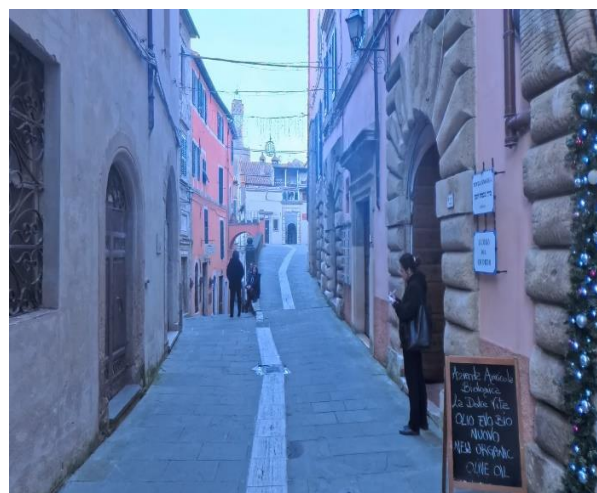
After a few meters we find ourselves in front of two roads, we continue along the right one which has a ramp and a low wall on the left side that allows us to admire the houses on the opposite side, located along the parallel street.

Accessibility:

The door of the Little Synagogue has a 7 cm step on the outside and an internal threshold of 4 cm. The main external door has a net span of more than 90 cm. At the entrance there is an additional single-leaf glass door, with a net span of more than 90 cm. The avenue on the right towards the Collegiate Church of San Niccolò has a ramp of about 12 meters and a slope of 9%, regular pavement.



17 Via Selvi



18 Synagogue entrance



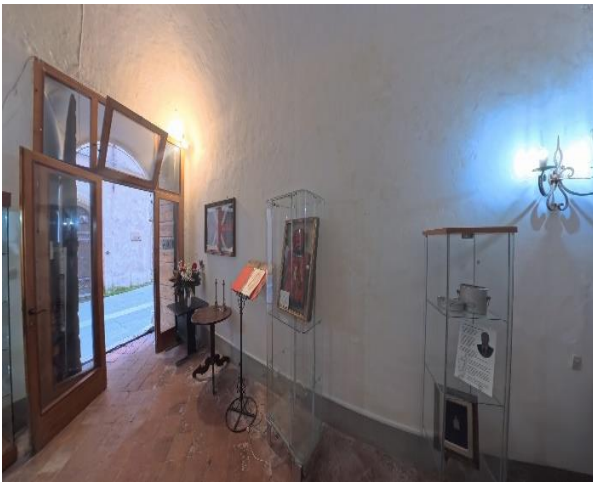
Project promoted by



Regione Toscana



19 Synagogue interior



20 Synagogue interior

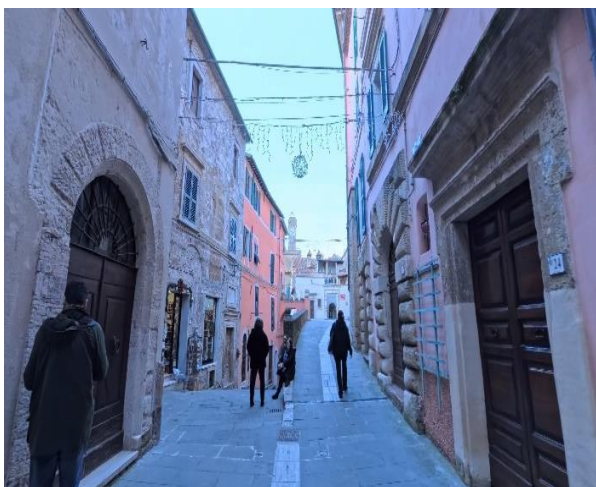


21 Synagogue interior

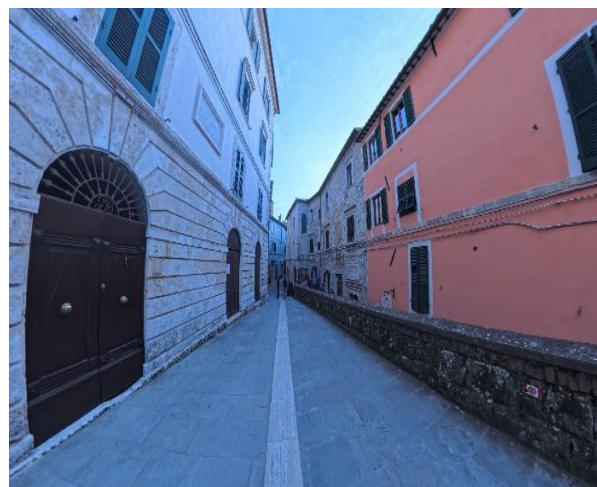
Project carried out with the contribution of the



**Presidenza del
Consiglio dei Ministri**
Ministro per la disabilità



22 Via Selvi



23 Ramp before the Collegiate Church

From here you begin to glimpse the Church of San Nicolò with a Renaissance-style façade, squared, simple and massive bell tower on the left side. The church is not accessible to guests with motor disabilities as it has numerous steps that cannot be overcome with any precautions.

The interior as indicated on the posted map has:

- 1 Chapel dedicated to St. Nicholas of Bari
- 2 Baptistery Chapel
- 3 Chapel of the Tabernacle for the custody of the Blessed Sacrament and wooden Crucifix of the sixteenth century.
- 4 Presbytery
- 5 Museum entrance
- 6 Museum with robes of Saints Teresa of Calcutta, Padre Pio and Pope John Paul II.

The church acquired the title of "Collegiate Church" in 1509.





Entering on the left side we find two chapels with ribbed vaults. The first is dedicated to St. Nicholas of Bari, patron saint of Sorano, a thaumaturgic bishop who lived between 200 and 300 and to Santa Felicissima Martire, co-patron saint of the town, whose body is venerated. To be admired in the second chapel on the left is the baptismal font where the sacrament of baptism is administered, the font is decorated with large pods and an oval border, dated 1549.

Continuing forward, always on the left side, we find a gate, dating back to the first half of the nineteenth century, which closes the Chapel of the Tabernacle for the custody of the Blessed Sacrament and the sixteenth-century wooden Crucifix. Inside the chapel is visible the painting depicting St. Joseph with the Child, executed by Pietro Aldi (1852 -1888), commissioned by Dr. Angelo Busatti.

The altar dedicated to Santa Felicissima was distorted in the nineteenth century and the current arrangement dates back to the latest restorations. The plant is developed on load-bearing walls and large pillars that support the vaulted slab. The church, already mentioned in the second half of the 1200s, has a cross shape oriented according to the east-west axis, so that the praying community could be illuminated by the sun, symbol of Christ, at the beginning and end of the day.

Next to the main altar on the right side there is another small chapel that leads us through a door to the Collegiate Museum.

The Museum, restored in 2021 thanks to donations from benefactors, faithful and a mortgage undertaken by the parish run by Antonio Minucci, offers visitors a valuable exhibition of works and relics that testify to important pages in the history of Christianity and art.

The museum internally houses large spaces without obstacles. In front of the main entrance there is a rectangular opening that allows access to a small room furnished with





a Christ on the cross and the Madonna, while continuing the path to the right, you enter the space dedicated to the relics, through a beautiful arched door more than 90 cm wide. Thanks to the gift of Cardinal Comastri, archpriest of St. Peter's Basilica, but also of Sorano origin, who was ordained a priest in this church on March 11, 1967, a cassock of Pope St. John Paul II is preserved in the Museum of the illustrious Collegiate Church. The space is currently open to the public, and is accessible from the church itself. The museum, set up with care, in addition to the precious works it houses, is also testimony to popular devotion.

In addition to the cassock of Pope John Paul II, there is the one that belonged to Pope Emeritus Benedict XVI, of the Apostolic Protonotary Monsignor Vincenzo Taviani. But other important relics are added to the artistic and devotional heritage of the Museum such as those of St. Mother Teresa of Calcutta and St. Padre Pio of Pietrelcina.

Accessibility

The Collegiate Entrance: has a main external and internal portal with two leaves with a net span of more than 90 cm and smooth flooring.

Collegiate Museum: The double-leaf door has a net span of more than 90 cm. The entrance to the museum is free of obstacles.



Project promoted by



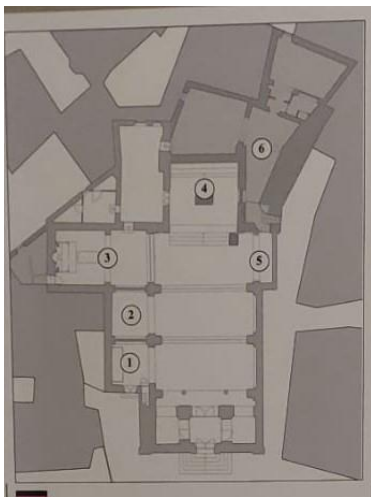
Regione Toscana



24 External steps of the Collegiate Church



25 Collegiate Entrance Door



26 Collegiate Map



27 left aisle

Project carried out with the contribution of the



Presidenza del
Consiglio dei Ministri
Ministro per la disabilità

Project promoted by



Regione Toscana



28 Chapel of the Tabernacle



29 altar dedicated to Santa Felicissimai



30 interior



31 Entrance to the Collegiate Museum

Project carried out with the contribution of the



**Presidenza del
Consiglio dei Ministri**
Ministro per la disabilità

Project promoted by



Regione Toscana



32 Museum Gate



33 internal corridor Museum



34 Museum Room



35 Museum interior spaces

Project carried out with the contribution of the



**Presidenza del
Consiglio dei Ministri**
Ministro per la disabilità

Project promoted by



Regione Toscana



36 Museum Room



37 Large interior spaces



38 Relics and papal robes



39 Relics and papal robes

Project carried out with the contribution of the



**Presidenza del
Consiglio dei Ministri**
Ministro per la disabilità



Leaving the church on the right we find the Palazzo Comitale, residence of the Orsini family until the mid-fifteenth century, when the renovation of the Rocca began. The building has a large courtyard but today only the entrance portal remains original in square travertine drafts with architrave and frame adorned with roses and ursine collar. The interior has unfortunately been altered even if the part of the loggia, the arches and the columns are still recognizable today.

To the right of the church and in front of the Palazzo Comitale, a narrower avenue opens up that leads us to the Cortilone and the Masso Leopoldino.

The path set inside the high tuff side walls, ends in front of a steep climb of stairs, which cannot be overcome with any precaution, which lead us to the Cortilone building.

The Cortilone is located in the northern, elevated part of the town, with two sides directly set on the edge of the cliff overlooking the Lente river. The building was commissioned by Niccolò IV Orsini in 1559 as reported by the travertine plaque, to provide the village with a large granary. Currently the interior is divided into many rooms due to the presence of walls placed successively, during the various uses of the environment.

Today this wonderful space, precisely because of its architectural characteristics and the scenographic suggestions it offers, is used for art exhibitions and for the annulæ market exhibition that takes place in Sorano in August.

Accessibility

From the Palazzo Comitale, an avenue opens up with an irregular path and very significant ramps with gradients of up to 25%.



Project promoted by



Regione Toscana



40 Comital Palace



41 Quaint avenue



42 Path set in the tuff



43 Path set in the tuff

Project carried out with the contribution of the



**Presidenza del
Consiglio dei Ministri**
Ministro per la disabilità

Project promoted by



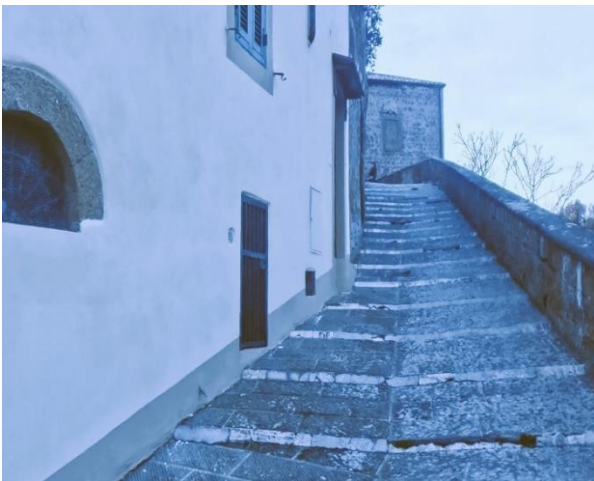
Regione Toscana



44 path set in the tuff and ramps



45 Ramps



46 Steep stairways



47 Courtyard Building

Project carried out with the contribution of the



**Presidenza del
Consiglio dei Ministri**
Ministro per la disabilità



To the left of the Cortilone there is a very high staircase, unfortunately not surmountable with any precautions, which directs us inside the Masso Leopoldino.

The staircase has numerous tuff steps of different heights that lead us to an iron gate which, after passing, has numerous other steps that lead us to the terrace of the Masso Leopoldino. The natural position and the strategic-military possibility for the inhabitants of the village to use the boulder for defensive purposes, suggested even before the ninth century to flatten the top of the huge tuffaceous boulder.

Following the construction of the Rocca, the defensive function of the boulder ceased, gradually replaced by a religious use, in fact at the top of the esplanade stood a small church dedicated to Santa Caterina. The boulder was further built in the Lorraine age due to the precarious conditions of some rocky crags. Unfortunately, on February 13, 1801, some tuffaceous rocks detached from the boulder and fell into the valley and overwhelmed many cellars, houses and stables.

Between 1820-1822 the Grand Duke Ferdinand III of Lorraine consolidated the tuffaceous rock with the construction of a large reinforcing wall to support the eastern side, while all the rock walls were smoothed to avoid further detachments. At the eastern end the crenellated tower with the public clock was erected, while the final works were completed by Grand Duke Leopold II, who gave the boulder its characteristic current shape.



Project promoted by



Regione Toscana



48 Stairways to reach the Leopoldino Keep



49 Stairways to reach the Leopoldino Keep



50 stairways to reach the Leopoldino Keep



51 Leopoldino Keep

Project carried out with the contribution of the



**Presidenza del
Consiglio dei Ministri**
Ministro per la disabilità

Project promoted by



Regione Toscana



52 Leopoldino Keep



53 Sorano View



54 View from above Mastio Leopoldino



55 Leopoldino Keep

Project carried out with the contribution of the



**Presidenza del
Consiglio dei Ministri**
Ministro per la disabilità



The **Fortress** can also be reached from the historic center via numerous irregular steps. People with motor disabilities can visit the outside of the Keep and the portal adorned with an ashlar typical of Ursinean buildings, surmounted by a coat of arms in which the Aldobrandeschi lions quarter themselves with the roses of the Orsini and with the heraldic bear under the crest, following the signs for San Quirico. Immediately outside the town of Sorano you reach a square where you can leave your car and continue towards the fortress.

The interior of the keep has regular flooring up to the next door.

The second door inside the Keep that directs us towards the inside of the Fortress has tuff steps.

The door with the staircase leads us inside a large square from where you can also reach by car according to the route described above. From here begins a stretch that leads us inside the Fortress through a pavement of smooth stone blocks. After this stretch, you cross a moat through a path that has an iron column in the center, 94 cm high that allows passage through an opening of about 1 meter

You enter the innermost and oldest part of the Fortress, also dominated by a beautiful central keep and an access door that precedes a cobbled avenue.

After the avenue, you enter a courtyard closed on three sides which has a red, smooth and herringbone pavement. Here we also find the Museum of the Orsini Fortress in Sorano, partially accessible to people with reduced mobility. On the front we find an arched door that directs us to a steep staircase that allows us to get not only to the lower floor, but also to be able to enjoy a beautiful surrounding panorama.

We continue the path passing the door on the right side of the panoramic terrace. We cross the system through a walkway on irregular, uneven and cobblestone steps until we





reach the last door of the raised core. Continue ahead through further flights of steep and irregular stairs until you reach the level of the village.

Accessibility

From the parking lot in Via Ricasoli, head towards the fortress on a flat path on an asphalt road, with 3 iron columns 94 cm high and internal space more than 90 cm wide. After a short stretch, the pavement in front of the door becomes stone and has a slope of 7%. At the entrance to the door we find an external threshold of 8 cm and an internal threshold of 4 cm.

Second door of the Keep: it has 10 steps 14 cm high and 3 in tuff with a variable height of 10/17 cm. People with physical disabilities can overcome the obstacle to visit the interior by taking the car back and following the directions already described in the section "path from the parking lot to the entrance".

Continuing towards the courtyard of the Fortress where the entrance to the Museum is also located, the path has a cobbled and irregular pavement with numerous steps.



Project promoted by



Regione Toscana



56 Flat path Fortezza



57 Fortress entrance



58 First Access Door



59 Second access door with steps

Project carried out with the contribution of the



**Presidenza del
Consiglio dei Ministri**
Ministro per la disabilità

Project promoted by



Regione Toscana



60 Inner square of the fortress



61 Central keep



62 cobbled avenue



63 cobbled and uneven avenue

Project carried out with the contribution of the



Presidenza del
Consiglio dei Ministri
Ministro per la disabilità

Project promoted by



Regione Toscana



64 Fortress internal square with herringbone pavement



65 Inner square Fortress with herringbone paving



66 Fortress staircase



67 Fortress staircase

Project carried out with the contribution of the



**Presidenza del
Consiglio dei Ministri**
Ministro per la disabilità

Project promoted by



Regione Toscana



68 Fortress Observation Deck



69 Fortress staircase



70 continuation of the staircase of the fortress



71 last stretch of the two steep and irregular ramps that lead to the village level

Project carried out with the contribution of the



**Presidenza del
Consiglio dei Ministri**
Ministro per la disabilità



Events

The main events in Scarlino include historical re-enactments, and summer cultural festivals, the most important are:

- The **Cellar Festival** with tastings of typical products and folk music that takes place in autumn (end of October, beginning of November).
- On December 30, however, an ancient tradition of peasant culture is renewed in Piazza Busatti: at nightfall **the lighting of the large pyre** takes place and traditional songs are sung around the fire. The event evokes ancient peasant traditions in which the fires signaled the well-being of the community
- In August, for five consecutive days , **the Market Exhibition** dedicated to local crafts and niche products takes place. The Market Exhibition is an initiative promoted by the Municipality of Sorano and the many artisans who populate the streets of the center in those days.

Accessible public places

In the village of Sorano village, the following public place with accessibility characteristics has been found:

- **Organic Farmhouse Aia del tufo – accessible toilets not detected**

See tabs with details below.

LOCAL	
Room type and name	Organic Farmhouse Aia del tufo
Location	Loc. Poggio La Mezzadria 8
Types of tables	4 legs

Project carried out with the contribution of the



Project promoted by



Regione Toscana

The restaurant has an outdoor space	YES
TOILETS	
There is an accessible toilet	Not detected



72 exterior Farmhouse



73 Indoor dining room

Project carried out with the contribution of the



Presidenza del
Consiglio dei Ministri
Ministro per la disabilità

Project promoted by



Regione Toscana



74 indoor dining room restaurant



75 exterior Farmhouse

Communal toilets

There is an accessible toilet	YES, in the historic center a few meters from the nineteenth-century Aqueduct
Reachable via	Ramp length 200 cm, width over 90 cm, slope 8%
Access	By coin mechanism or contactless card device
Net light external entrance door	90
Door type	automatic
Washbasin height	60 cm
Mirror	absent
Toilet height	50 cm

Project carried out with the contribution of the



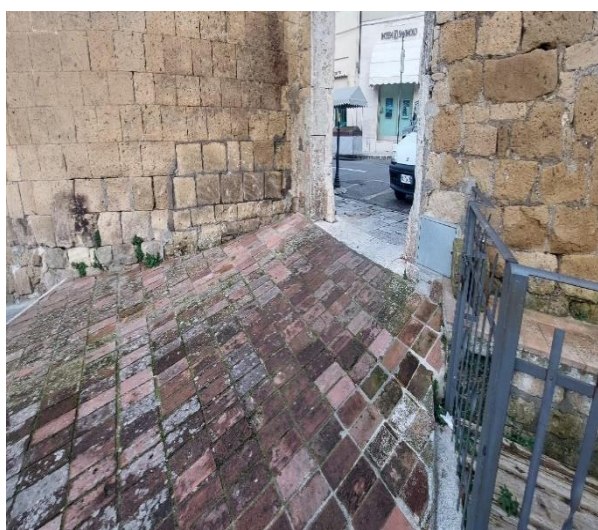
Presidenza del
Consiglio dei Ministri
Ministro per la disabilità

Project promoted by



Regione Toscana

Free space to the right of the toilet	Over 90 cm
Free space to the left of the toilet	24 cm
Front clearance	Over 90 cm
Presence of grab bar	YES
Alarm bell	YES, at 55 cm height
Washbasin height	65 cm
Mirror	absent
Eventual notes	Self-cleaning toilet



76 ramp before the public toilet



77 public toilet door with coin mechanism and contactless card device

Project carried out with the contribution of the



Presidenza del
Consiglio dei Ministri
Ministro per la disabilità

Project promoted by



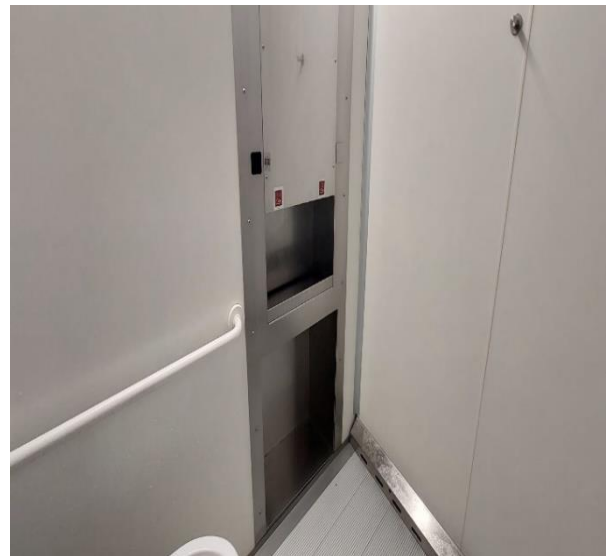
Regione Toscana



78 Interior Door



79 Toilet and grab bar



80 washbasin

Project carried out with the contribution of the



Presidenza del
Consiglio dei Ministri
Ministro per la disabilità



Medical practices/healthcare facilities

Hospitals near the property	<p>F. Petruccioli Hospital Via Nicola Ciacci n. 340 58017 Pitigliano (GR) Tel. +39 0564 618111 https://www.uslsudest.toscana.it/ospedali/ospedale-di-pitigliano.</p> <p>Acquapendente Hospital Via Battisti Cesare 68/A 01021 Acquapendente (VT) Tel +39 0761 3391 Distance about 25 km</p> <p>San Giovanni di Dio Hospital Fishermen's lakefront 58045 Orbetello (GR) Tel +39 0564 869111 Distance about 68 km</p>
Dialysis facilities	<p>Dialysis service present. It is activated at the request of the interested party. For organisational reasons, information and requests should preferably be requested well in advance at the following addresses:</p>

Project carried out with the contribution of the





	<p>Grosseto provincial area MISERICORDIA HOSPITAL IN GROSSETO</p> <p>Nephrology and Dialysis Unit Tel. +39 0564 485.218 from Monday to Friday, hours 09.00-12.00/15.00-19.00</p> <p>Papi Alberto - Hemodialysis Nursing Coordinator. Tel. +39 0564 485159 - alberto.papi@uslsudest.toscana.it</p> <p>Clinical Manager: Dr. Paolo Conti mobile +39 335 7207316 - paolo.conti@uslsudest.toscana.it</p> <p>Nursing Manager for Grosseto: Dr. Lorenzo Baragatti - lorenzo.baragatti@uslsudest.toscana.it</p>
Other healthcare facilities	Italian Red Cross Via Roma 99 58017 Pitigliano (GR) Tel +39 0564 617054 – Distance 9 km

TESTED BY: [Handy Superabile Social Promotion Association](#) in 2025

